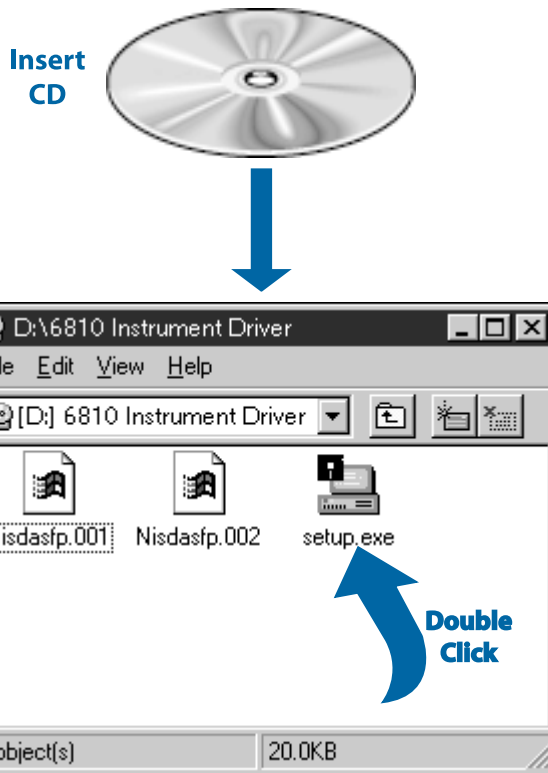


Setup and Test the PXI-6810

1 Install Your Software



Need more information?
See *Getting Started with Your PCI/PXI-6810 Serial Data Analyzer*.

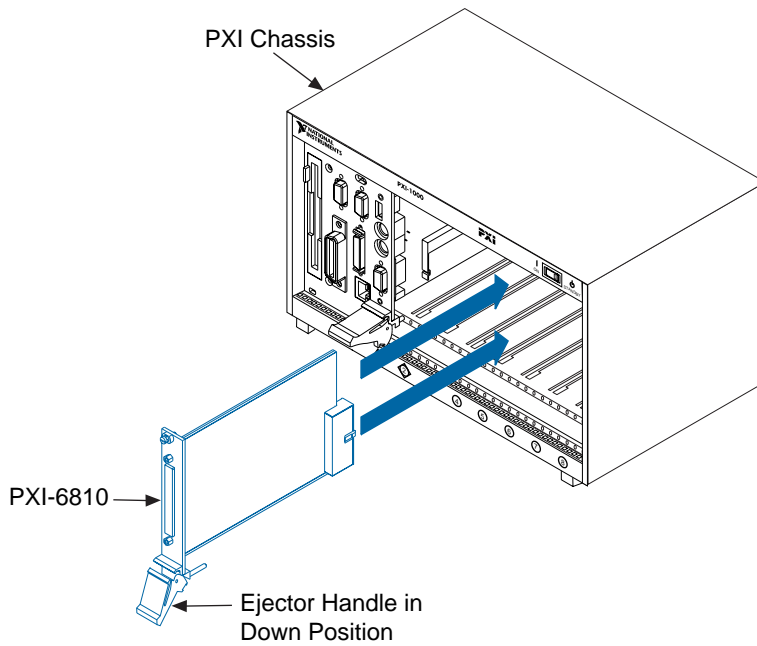
2

Install Your PXI-6810 Device



Caution

Turn the power off before installing your hardware.

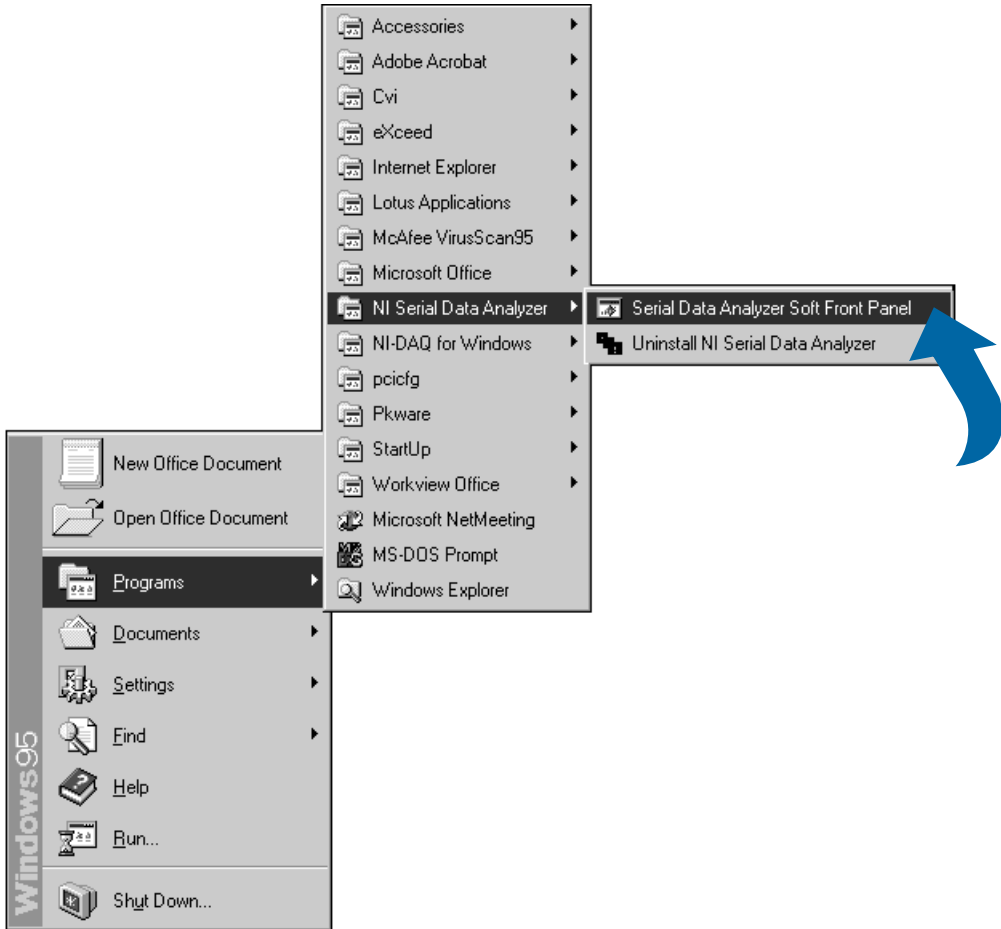


Need more information?

See *Getting Started with Your PCI/PXI-6810 Serial Data Analyzer.*

3

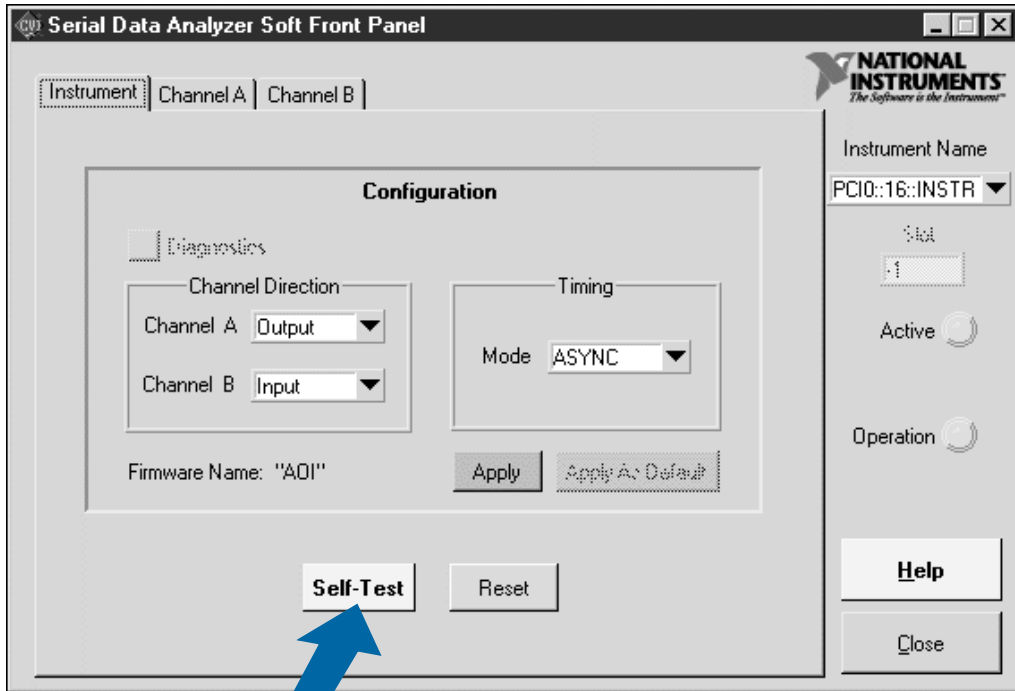
Run the Soft Front Panel



Need more information?

See *Getting Started with Your PCI/PXI-6810 Serial Data Analyzer*.

4 Run the Self-Test



Single
Click



Need more information?
See *Getting Started with Your PCI/PXI-6810 Serial Data Analyzer*.

